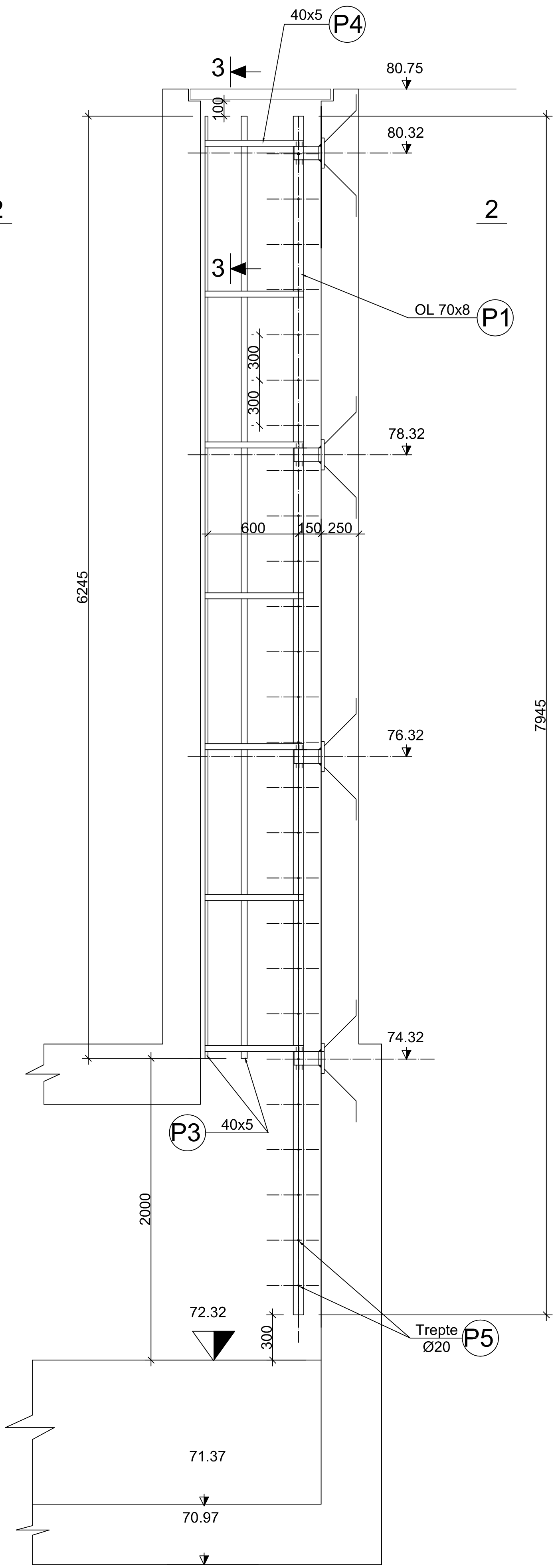


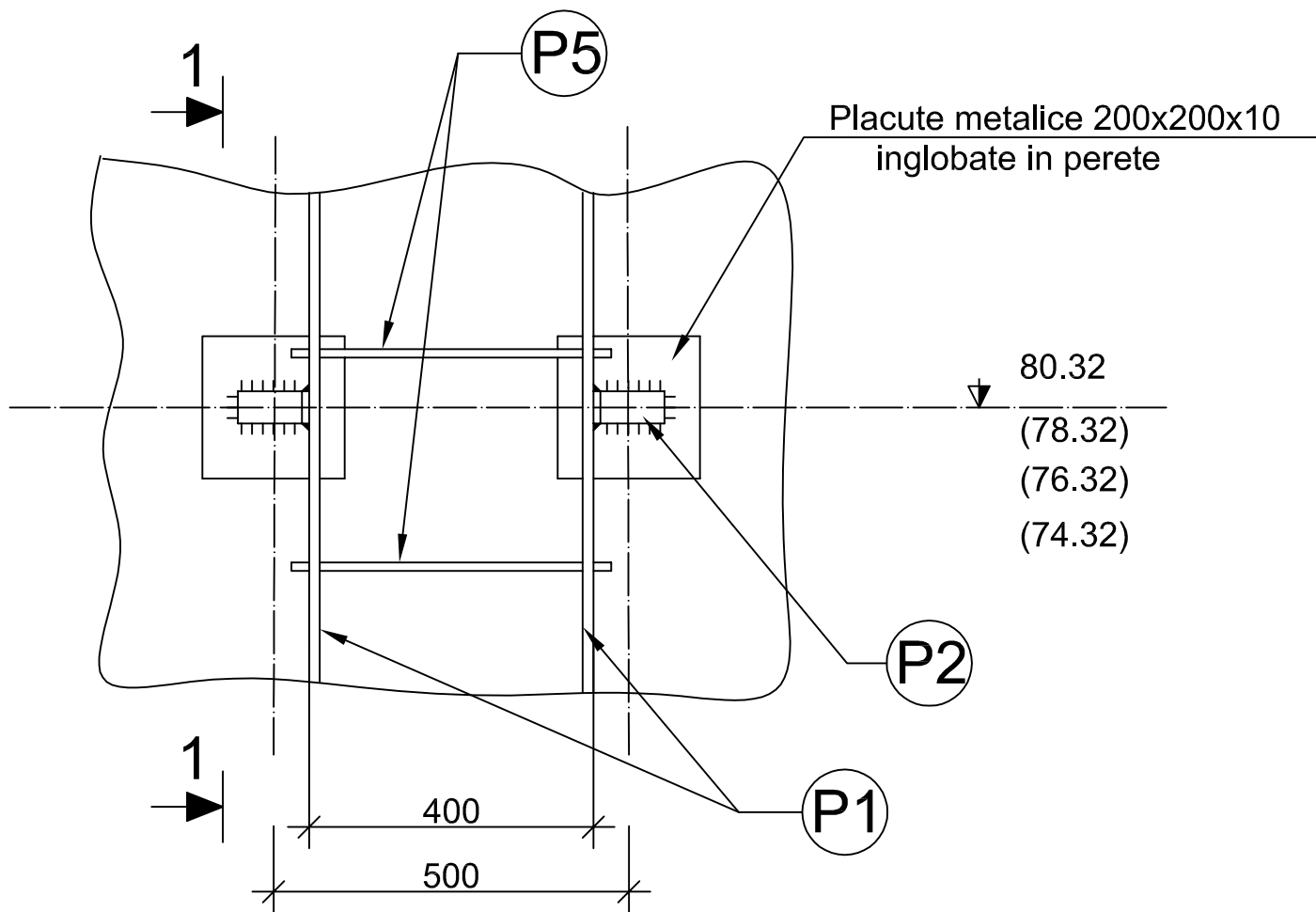
SECTIUNE 1-1

Scara 1:20



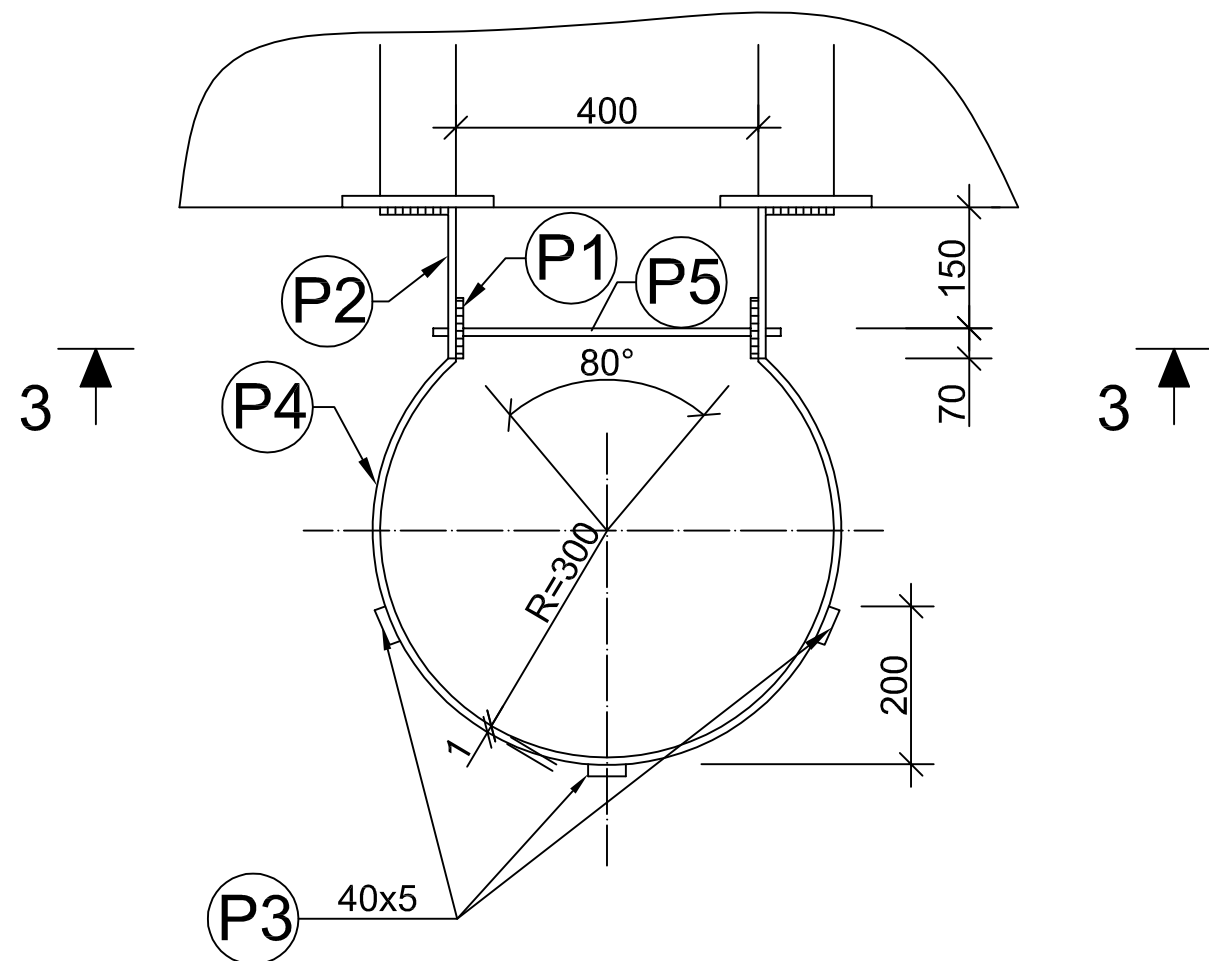
SECTIUNE 3-3

Scara 1:10



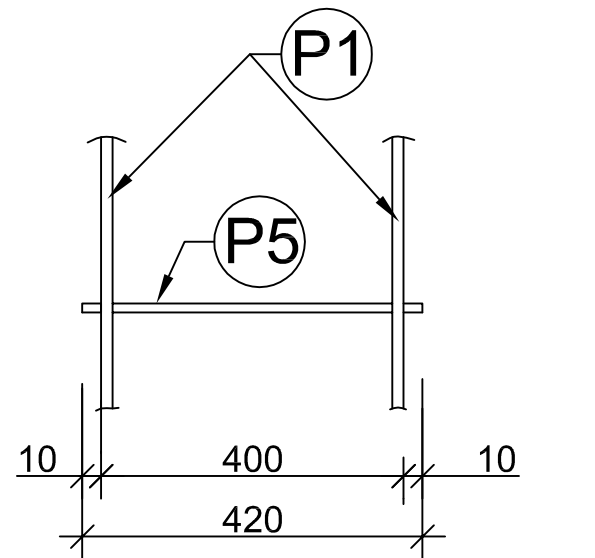
SECTIUNE 2-2

Scara 1:10

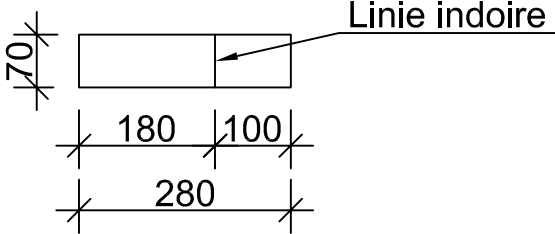


DETALIU TREAPTA

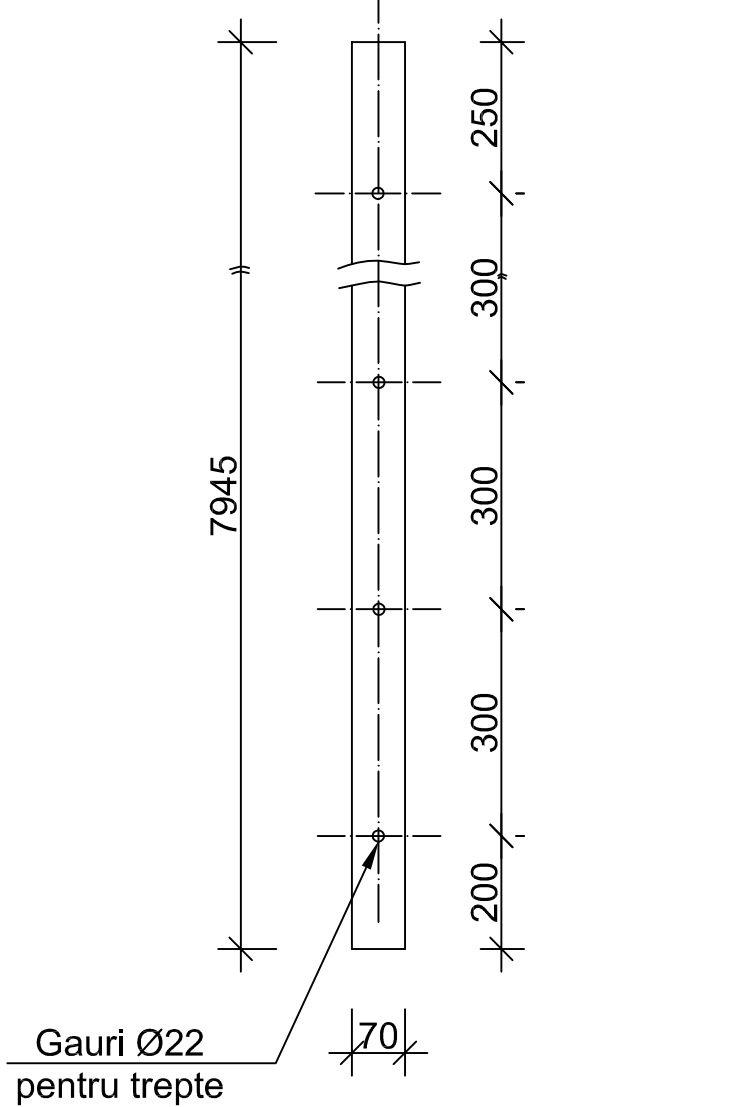
Scara 1:10



Poz. (P2)



Poz. (P1)



EXTRAS DE MATERIAL METALIC

Poz.	Sectiune	Lung.	Buc.	Greutate		
				pe ml	pe buc.	Total
P1	OL 70x8	7945	2	4.40	34.96	69.92
P2	OL 70x8	280	8	4.40	1.24	9.84
P3	OL 40x5	6245	3	1.60	9.99	29.97
P4	OL 40x5	1600	7	1.60	2.56	17.92
P5	Ø20	420	26	2.47	1.04	27.04
Suduri si rotunjiri				7.7		
TOTAL				163.00	kg	

NOTA

- Elementele ce compun scara se asambleaza prin suduri electrice, de grosime min. 6 mm, in cordoane continue, in atelier si la montaj.
- Suprafetele metalice aparente se protejeaza anticoroziv, conform caiet de sarcini.

VERIFICAT,
conform Lg.10/95 art.5a si b si HGR 925/95

Proiectat	Ing. S. Budea	Col. hordareau:	1-1057.03.031-020-001	
Verificat	Ing. A. Fale	P. de control:	241635976/4091/24.8.1	
Aprobat	Ing. L. Chivu	Data:	decembrie 2008	A0(841x594=0.499 mp)
Client: Cartier Ion Chiraga		CAMERA DE INTERSECTIE REȚELE DE CANALIZARE		
Beneficiar: Municipiul Bucuresti		COLLECTOR DN 1400 CU COLLECTOR 2-AM EXISTENT		
Descrierea contract: Realizarea zonei de incalzire cu boiler mare in		SCARA METALICA CU COS DE PROTECTIE (C3)		
rețea publică de alimentare cu apă și canalizare în zona Ion Chiraga				
Sursa de alimentare: Strada ACCORD GARA - Canal				
Institutul de Studii si		Scara		
Proiectat Energetice S.A.		1:20, 1:10		
www.energetice.ro		I-1057.03.031-H3-015		
office@energetice.ro				